

LOAD CELLS

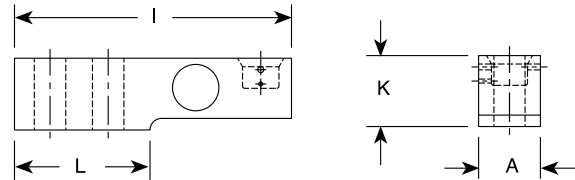
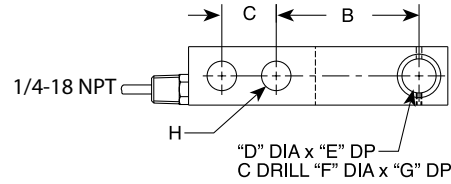


RL30745 Single-Ended Beam, Stainless Steel, Welded-seal, IP67, NTEP 1:5000 Class III Multiple



500 lb model

Picture is a representation of actual product



SPECIFICATIONS

Full Scale Output: 2.0mV/V	Safe Sideload: 100% Full scale	Seal Type: Welded-seal, IP67	Cable Color Code: Green..... + Excitation Black..... - Excitation White..... + Signal Red..... - Signal Yellow..... Shield
Bridge Resistance: 350 ohms, nominal	Rated Excitation: 10V DC (15V maximum)	Cable Length: 30 ft/9.1 m/15 ft	Warranty: Two-year limited warranty
Material/Finish: Stainless steel	Combined Error: 0.03%	Cable Diameter: .190 polyurethane jacket	Approvals:
Temperature: Compensated range 0°F to 150°F/-18°C to 65°C	Non-repeatability: 0.01% Full scale		
Safe Overload: 150% Full scale	Insulation Resistance: 5000 megohms		

DIMENSIONS

RATED CAPACITY	A	B	C	D	E	F	G	H	I	K	L
lb/inches											
500-4,000	1.20	3.00	1.00	.63	.68	.507	.189	.500	5.25	1.22	2.27
5,000	1.46	3.00	1.00	.63	.92	.539	.38	.500	5.38	1.40	2.28
10,000	1.68	3.75	1.50	.88	1.17	.533	.44	.750	6.87	1.68	3.34
kg/mm											
226.8-1814.2	30.5	76.2	25.4	16.0	17.5	22.4	4.8	12.7	133.3	30.9	57.6
2268	37.1	76.2	25.4	16.0	23.4	22.4	9.7	12.7	136.7	35.5	57.9
4536	42.7	95.3	38.1	22.4	29.7	35.1	11.8	19.1	174.5	42.6	84.8

ORDER INFORMATION

LOAD RATING	PART #	PRICE
30' cables		
500 lb (226.8 kg)	76213	Consult
1,250 lb (567.0 kg)	47946	Consult
2,500 lb (1,134 kg)	45463	Consult
5,000 lb (2,268 kg)	45465	Consult
10,000 lb (4,536 kg)	45466	Consult
15' cables		
500 lb (226.8 kg)	101091	Consult
1,250 lb (567.0 kg)	101092	Consult
2,500 lb (1,134 kg)	101093	Consult
5,000 lb (2,268 kg)	101094	Consult
10,000 lb (4,536 kg)	101095	Consult
Rocker Pin	108612	Consult
0-ring*	108202	Consult

*Two per pin

INTERCHANGEABLE PRODUCTS

MANUFACTURER	MODEL	PAGE #
Mettler-Toledo®	TB600529-500 lb	—
Mettler-Toledo	TB600363-1250 lb	—
Mettler-Toledo	TB600342-2500 lb	—
Mettler-Toledo	TB600343-5000 lb	—
Mettler-Toledo	TB600364-10000 lb	—
HBM®	THC	237



RICE LAKE WEIGHING SYSTEMS

